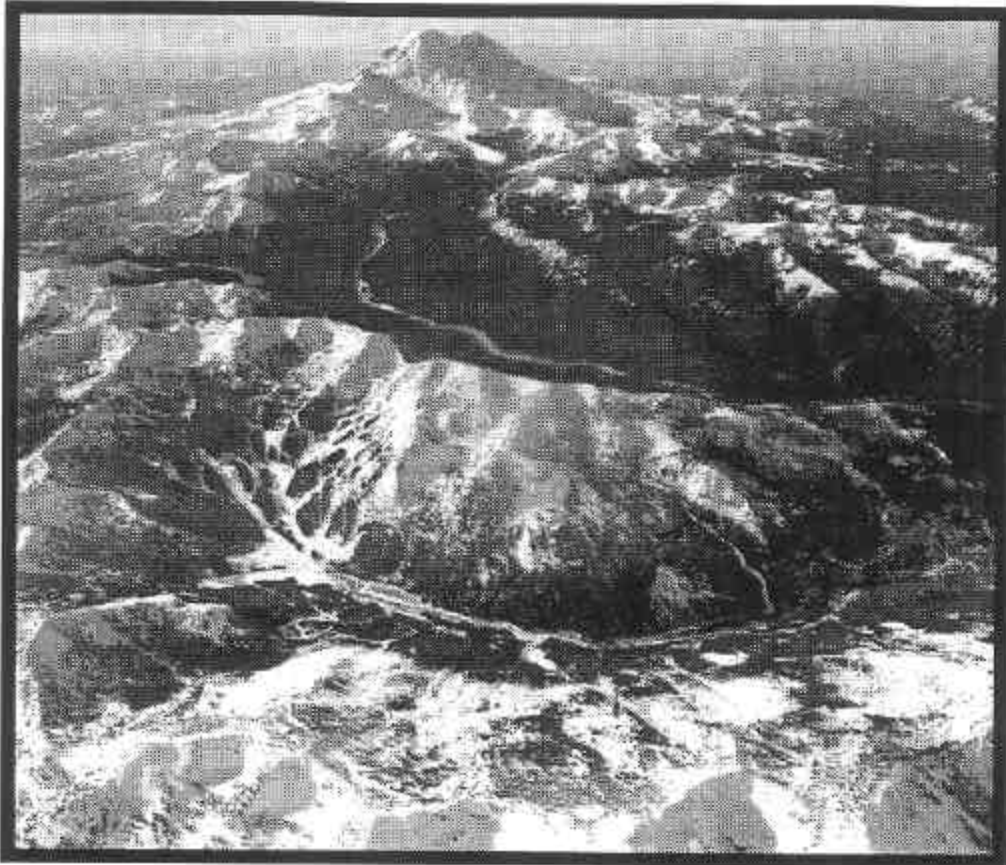


Crystal Mountain Master Development Plan

Final Environmental Impact Statement



Record of Decision

August 2004




USDA, U.S. FOREST SERVICE

MT. BAKER-SNOQUALMIE NATIONAL FOREST

Table ROD-5

Summary Comparison of Environmental Consequences

Parameter	Alternative 1	Alternative 2	Alternative 3	Alternative 4	Alternative 5	Alternative 6	Selected Alternative
Pyallup River TMDL	Consistent	Consistent	Consistent	Consistent	Consistent	Consistent	Consistent
Vegetation							
Wetland Impacts (acres):							
Palustrine Emergent	-	0.61	0.61	0.6	0.59	0.61	0.61
Palustrine Scrub/Shrub	-	0.51	0.51	0.49	0.49	0.49	0.43
Palustrine Forested	-	0.31	0.31	0.31	0.31	0.31	0.31
Total	-	1.43	1.43	1.4	1.39	1.41	1.34 
Vegetation Impacts (acres):							
Immature western hemlock	-	14.74	12.13	11.99	14.45	13.96	11.36
Mature western hemlock	-	0.97	0.97	0.97	0.97	0.97	0.95
Immature Pacific silver fir	-	37.76	36.74	36.71	33.68	40.4	39.46
Mature Pacific silver fir	-	10.56	10.56	7.25	1.76	7.24	7.24
Immature mixed fir	-	22.89	22.9	18.9	8.13	15.22	15.1
Mature mountain hemlock	-	6.84	6.84	6.83	3.83	6.83	6.83
Immature subalpine fir	-	11.81	11.8	11.8	4.34	8.57	8.57
Mature subalpine fir	-	9.73	9.73	8.24	2.07	9.75	9.75
Subalpine fir parkland	-	23.6	21.73	17.94	15.86	17.25	14.44
Maintained ski trails	-	59.46	59.43	63.42	55.31	59.43	59.42
Herbaceous – natural	-	9.21	9.2	4.92	4.29	4.03	4.03
Shrub - natural	-	0.29	0.29	0.29	0	0.29	0.29
Shrub – managed	-	0.67	0.67	0.67	0.67	0.67	0.67
Rock cliffs/Talus slopes	-	2.99	2.99	1.86	3.47	3.2	3.15
Wetlands	-	1.43	1.43	1.4	1.39	1.41	1.34
Total	-	212.95	207.43	193.19	150.22	189.22	182.6